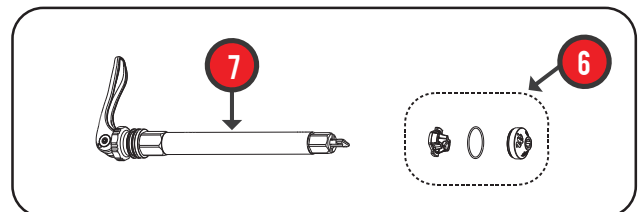
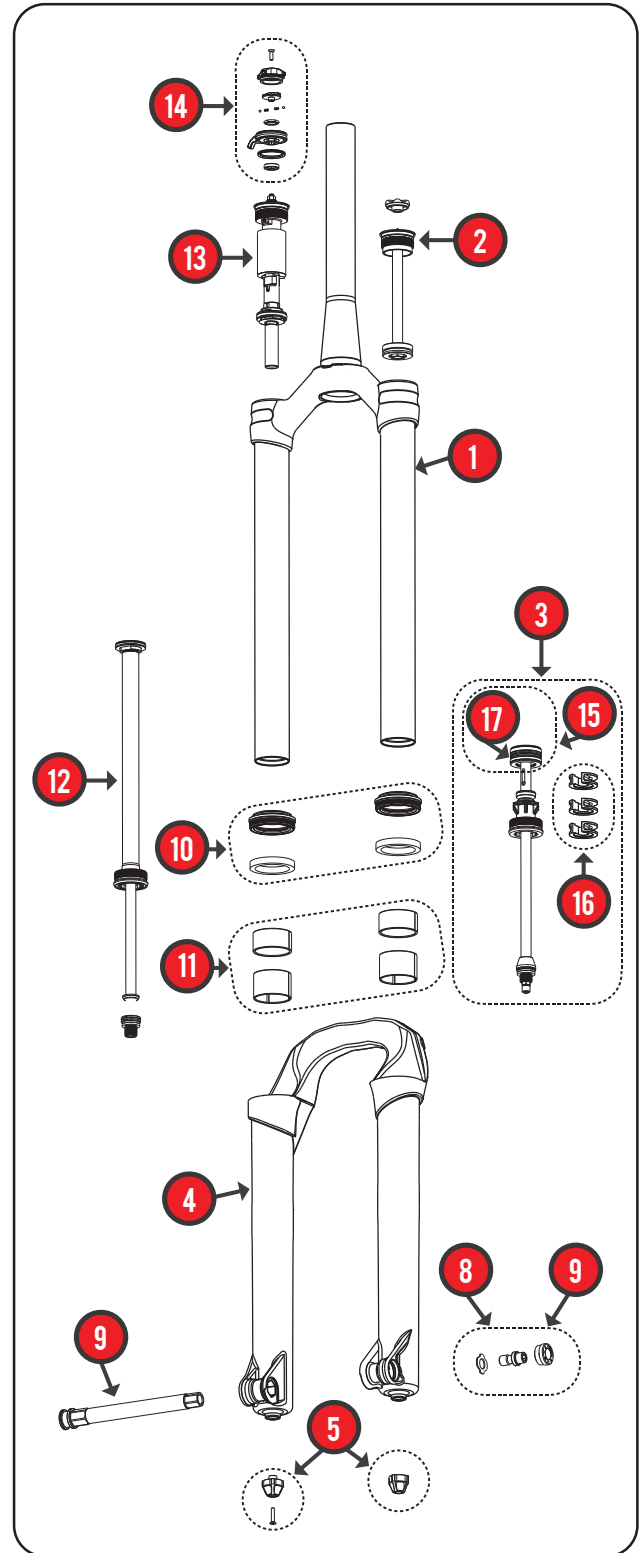


MATTOC PRO 100 26 EXPLODED VIEW

ITEM	DESCRIPTION	PART NUMBER
1	CROWN STEER ASSEMBLY - BLACK	141-30996-K011
	CROWN STEER ASSEMBLY - WHITE	141-30996-K012
	CROWN STEER ASSEMBLY - RED	141-30996-K013
2	IRT ASSEMBLY	141-32668-K003
3	AIR SPRING ASSEMBLY	141-30996-K005
4	CASTING - BLACK	141-30996-K008
	CASTING - WHITE	141-30996-K009
	CASTING - RED	141-30996-K010
5	REBOUND KNOB / AIR VALVE CAP	141-32155-K016
6	QR15 AXLE HARDWARE	141-28131-K024
7	QR15 AXLE 100	141-28131-K016
8	HEXLOCK SL HARDWARE	141-33147-K003
9	HEXLOCK SL AXLE (WITH HARDWARE)	141-33147-K001
10	SEAL KIT	141-34000
11	BUSHING KIT	141-30996-K019
12	REBOUND DAMPER ASSEMBLY	141-30996-K003
13	MC2 COMPRESSION DAMPER & KNOB	141-30996-K001
14	MC2 KNOB KIT	141-32155-K015
15	AIR PISTON SUB-ASSEMBLY	141-30996-K023
16	TRAVEL ADJUST SPACER KIT	141-30159-K012
17	AIR PISTON SEAL ONLY, QUAD-RING	141-32155-K012
	SEAL/REBUILD KIT 34MM	141-28528-K008
	DECAL KIT	141-32156-K029



PRO



HAYES

