

SHOCKCRAFT SELF-INSTALL SHOCK HARDWARE

To supply shock hardware we need these measurements:

- WIDTH TOTAL
- BOLT DIAMETER
- PIN DIAMETER*
- WIDTH EYELET*

*For 12.7x12.7mm (1/2" x 1/2") we already know these two.

COMMON PIN DIAMETERS:

10mm for Vintage RockShox
 11.1mm (7/16") for Avalanche
 12mm for 2005-2011 Manitou, X-Fusion & some Rockshox
 12.7mm (1/2") for all Fox & almost all modern shocks

BOLT DIAMETER:

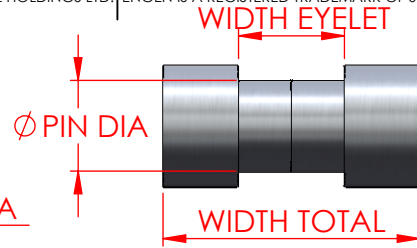
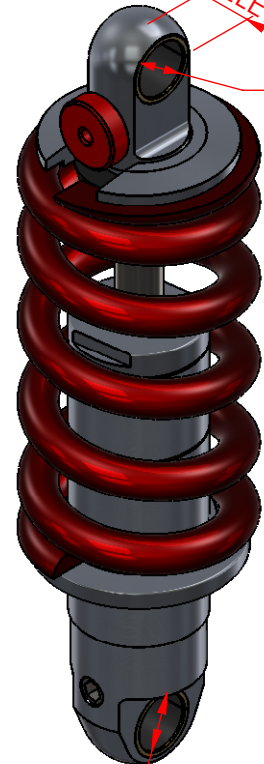
Usually 6mm or 8mm.
 Some bikes use 10mm.
 Some bikes use inch sizing (3/8" =9.53mm etc)

EYELET WIDTH:

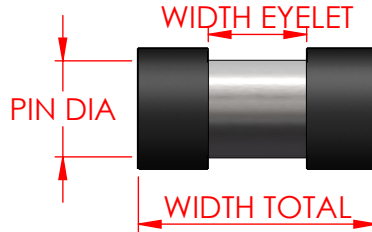
12.7mm for shocks using 12.7mm shock pins
 12 or 14mm for shocks with 12mm shock pins

TWO PIECE REDUCERS:

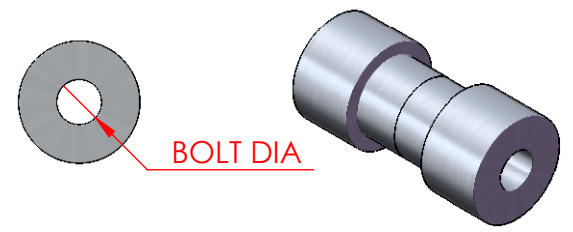
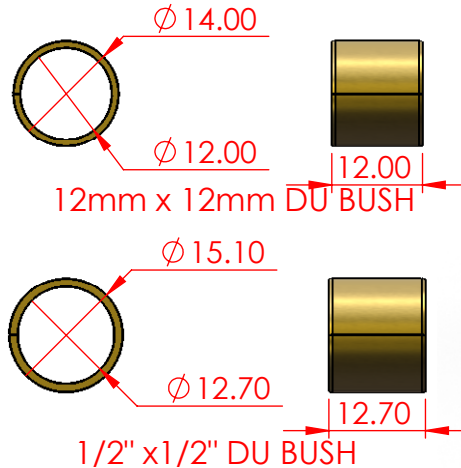
We don't make 2 piece shock reducers but have some old stock. They are included here for sizing.



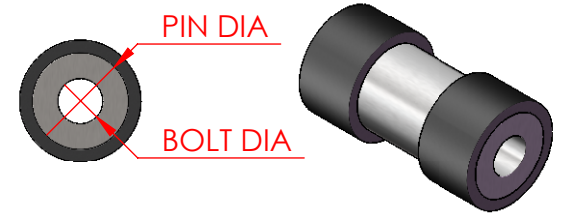
2 PIECE SHOCK HARDWARE



3 PIECE SHOCK HARDWARE



BOLT DIA



PIN DIA

BOLT DIA



	REV NUMBER	2	LAST ISS	10 APR 2017	TITLE:	
	DRAWN	D.HISCOCK	FIRST ISS	5 OCT 2010	Shockcraft Hardware	
	DESIGNED	D.HISCOCK				
	CLIENT	SHOCKCRAFT			MATERIAL:	DWG#-PART#-SHEET#:
JOB #	1006			VARIOUS	1006-ME-01	A4
ALL DIMENSIONS IN mm TOLERANCE ±1mm PER m UNLESS NOTED OTHERWISE (UNO)			DEBUR AND BREAK ALL SHARP EDGES		FINISH:	SW-FILE NAME: Shockcraft Hardware.SLDDRW
					AS MACHINED	
					WEIGHT: 0 kg	SCALE:1:1 DO NOT SCALE DRAWING SHEET 1 OF 1